

ASSEMBLY INSTRUCTIONS

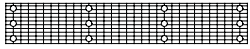
SM967205PWB



Check Components

Components:

Panels:



(3) Floor Panels
(open hole sockets)



(2) 1st Level
(open hole sockets)



(2) 2nd Levels
(4 open hole sockets)



(1) 3rd Level
(8 open hole sockets)

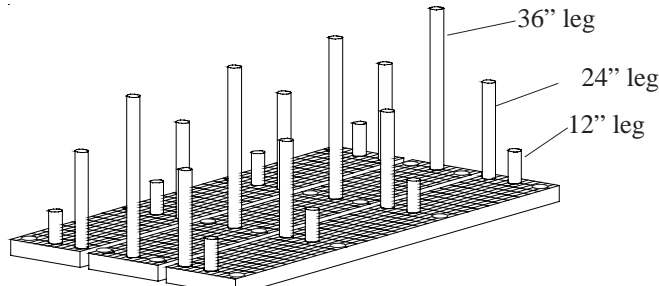
Waterbeds: (10)

Legs:

- (24) - 12"
- (8) - 24"
- (4) - 36"
- (8) - 72"



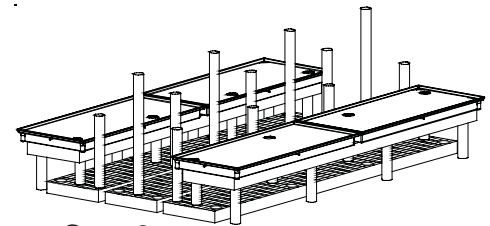
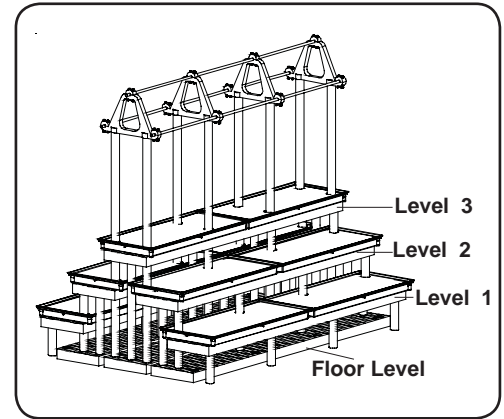
Oil all sockets
before assembly



Step 1
Floor Level

Place legs as shown.
Push legs through to ground.

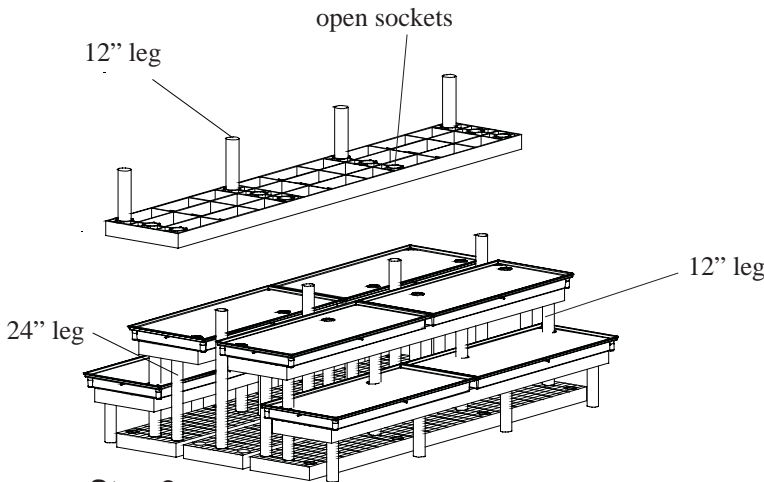
Fully Assembled



Step 2

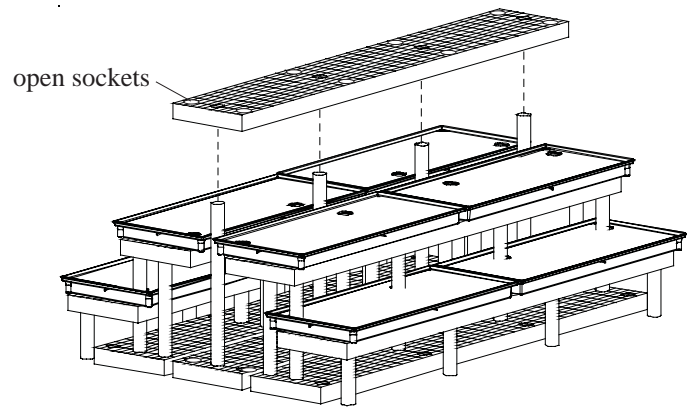
Level 1

Position (2) Level 1 Panels on 12" legs
overhanging outside edge as shown.



Step 3
Level 2

- A. Invert Level 2 panel and place
(3) 12" legs in outside closed sockets.
- B. Position center sockets of panel on 24" legs
while fitting 12" legs in sockets of waterbed pushing leg to the Level
1 panel. Push panel down so that the 24" legs are seated in the
center sockets as shown. Add Waterbeds sockets facing inward and
aligned with back open hole sockets of Level 2panel.



Step 4
Level 3

Position center sockets of 3rd Level panel on
36" legs while panel over hangs level 2. Push
panel down so that the 36" legs are seated in
the sockets.

ASSEMBLY INSTRUCTIONS

SM967205PWB

Oil All Sockets
Before Assembly



Check
Components

Components:

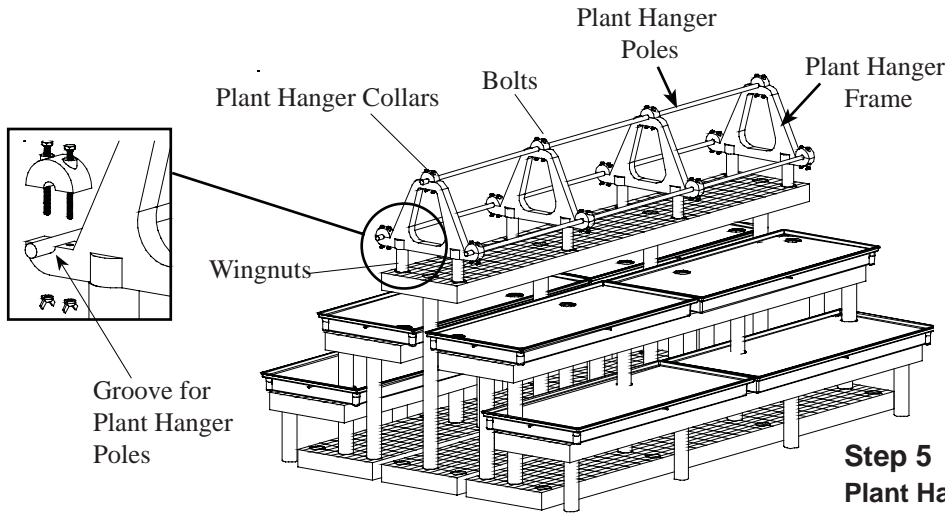
Plant Hanger Tops: 4

Plant Hanger Collars: 12

Plant Hanger Poles: 3

Bolts: 24

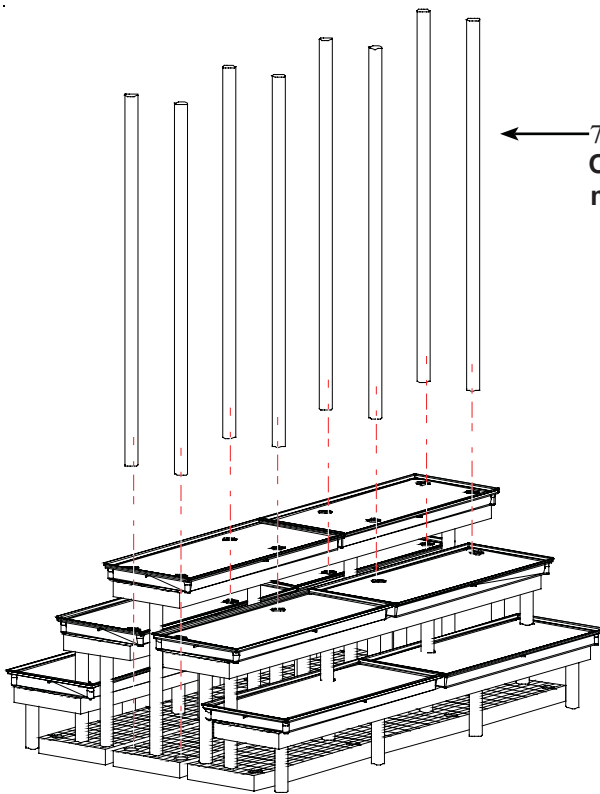
Wingnuts: 24



Step 5

Plant Hanger Tops

Before placing Waterbeds on Level 3 Panel, assemble plant hanger tops by using open hole sockets in Level 3 Panel to align plant hanger frames. Next, place **plant hanger poles** into small groove in plant hanger frames. Place **plant hanger collars** over poles and fasten down with bolts and wingnuts.

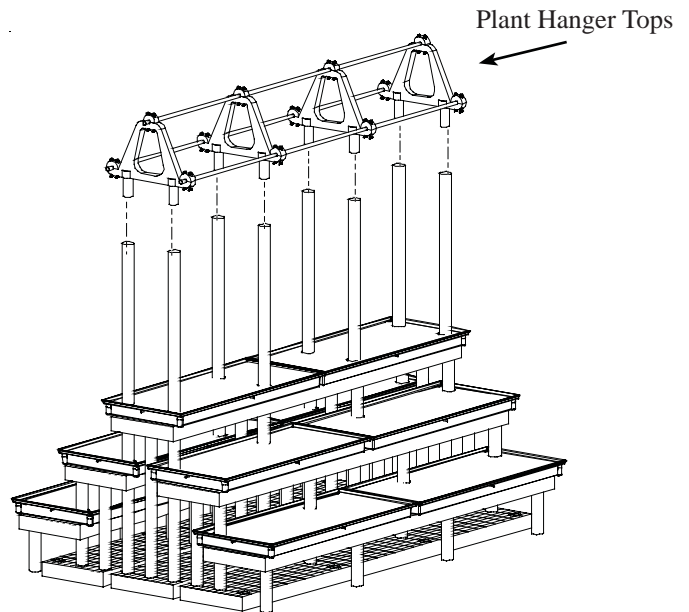


← 72" leg
Oiling the sockets will
make this step easier.

Step 6

Plant Hanger Legs

Remove plant hanger tops and add Waterbeds to Level 3 Panel aligning Waterbed sockets to Level 3 Panel open hole sockets. Insert **72" legs** into Waterbed open hole sockets of Level 3 and 2. Slide legs all the way through open hole sockets in floor panels. (Make sure to push legs all the way down to the floor).



Step 7

Plant Hanger Assembly

Insert Plant hange assembly in **72" legs** as shown.