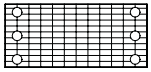


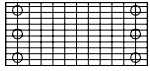
# ASSEMBLY INSTRUCTIONS

## Components:

**Panels: 14**



**(5) Floor Level**  
(open sockets)



**(9) Levels 1, 2 & 3**  
(closed sockets)

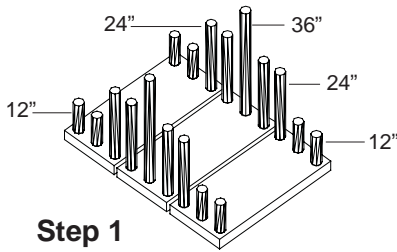
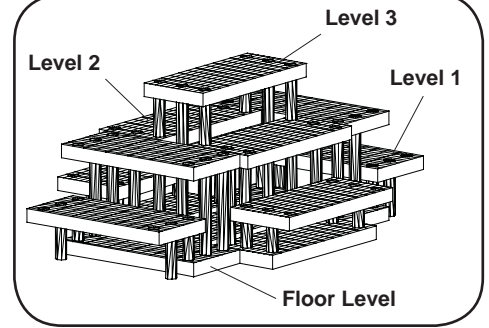
### Legs:

- (20) -- 12"
- (16) -- 24"
- (2) -- 36"

## SM923609PI Pyramid Island

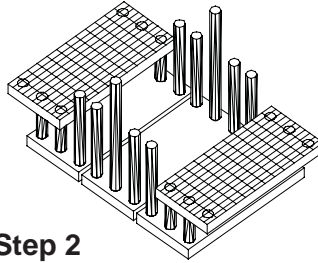
**Oil All Sockets  
Before Assembly**

### Fully Assembled



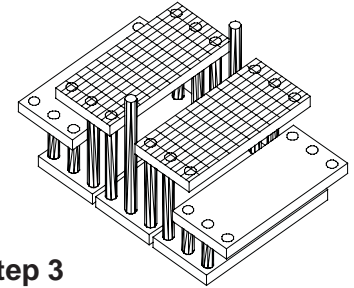
### Step 1 Floor Level

Position floor panels and place legs as shown. Push legs through to ground.



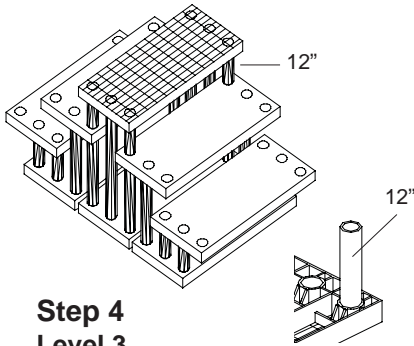
### Step 2 Level 1

Position the Level 1 panels on **12" legs** overhanging outside edges as shown.



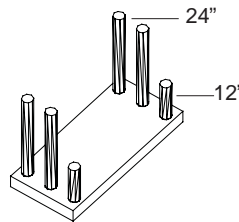
### Step 3 Level 2

Position the Level 2 panels on **24" legs** overhanging outside edges as shown.



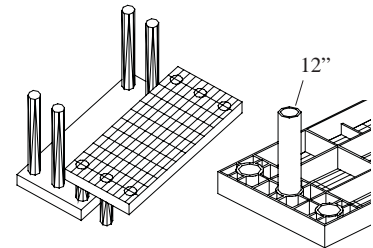
### Step 4 Level 3

- A. Invert Level 3 panel and place **(4) 12" legs** in each corner.
- B. Position panel on **36" legs** using middle row of sockets. (Make sure panels are pushed all the way down).



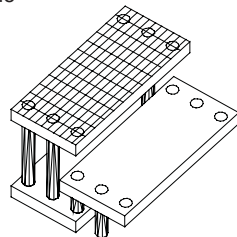
### Step 5 Floor Level

Position floor panel and insert **12" and 24" legs** as shown.



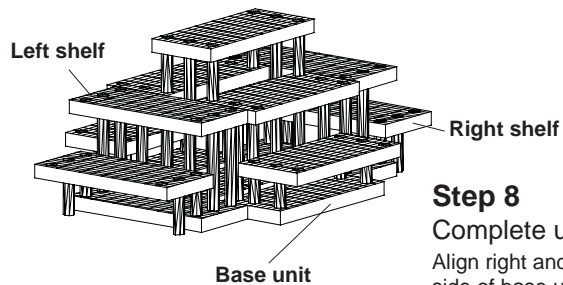
### Step 6 Level 1

- A. Invert Level 1 panel and place **(2) 12" legs** in middle sockets.
- B. Position panel on **12" legs** in floor panel using outside row of sockets. (Make sure panel is pushed all the way down).



### Step 7 Left shelf

Position level 2 panel on **24" legs** overhanging outside edge as shown. Repeat steps for right shelf.



### Step 8 Complete unit

Align right and left shelf on each side of base unit.